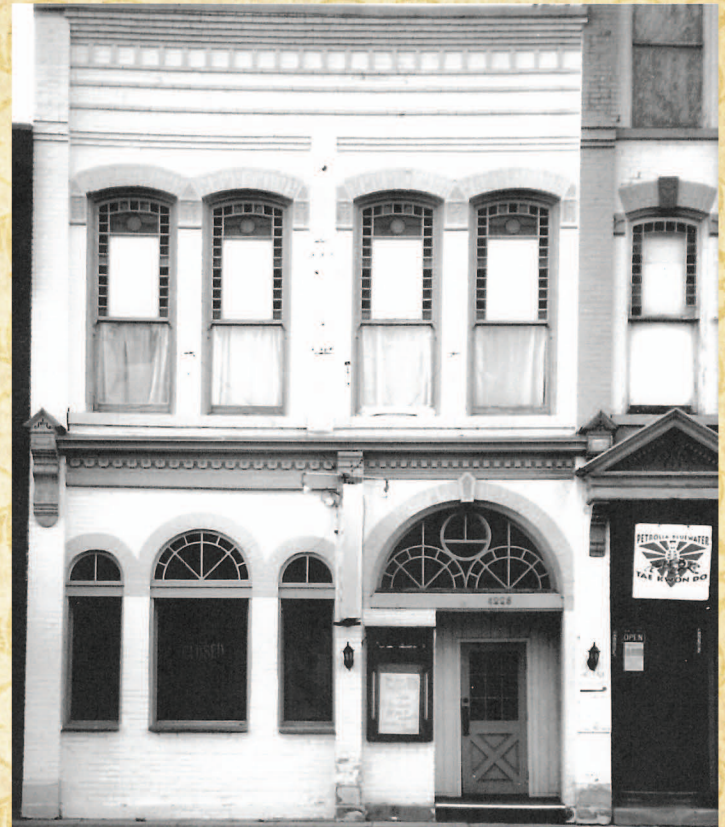


# PARKINSON BLOCK 4228 PETROLIA LINE



The Parkinson Block was built in 1885. It has served as a grocery store, a liquor store, numerous restaurants and even a church. The Bethel Mission, later named the Bethel United Missionary Church had regular services here for several decades.

Parkinson Block, originally called the Mearns Block, located at 4228 Petrolia Line. Dr. John Mearns was appointed Village Physician by Council in 1869 and served as Petrolia's mayor from 1888 to 1889. He purchased the lot in 1871 from John H. Fairbank and had likely constructed a wooden building there like most business owners at the time. In 1888, Dr. Mearns had a two-story, white brick building constructed at the same time as the Oddfellows' Hall next door. The lower floor was occupied by druggist William H. Dale and contained a store with a laboratory in the back. The brand-new store was outfitted with shelving made of ash wood trimmed with black walnut and filled with bottles of the latest remedies.

When Robert Stanley Jackson moved to Petrolia in 1898, he took over the store from Mr. Dale and operated a business there until 1921 when he moved to the Denham Block. At the same time, the block was sold to George Parkinson and became known as the Parkinson Block. In 1936, the Bethel Missionary Church purchased the building and used it as a chapel until the late 1970s.

Current Occupant(s):

**The Stitcharie**

Previous Occupant(s):

**Picker's Emporium,**

**Bethel United Missionary Church,**

**JG2 Holdings, Lo's Country Cookin',**

**Paradise Restaurant,**

**Black Gold Restaurant**



This heritage project is sponsored by

